

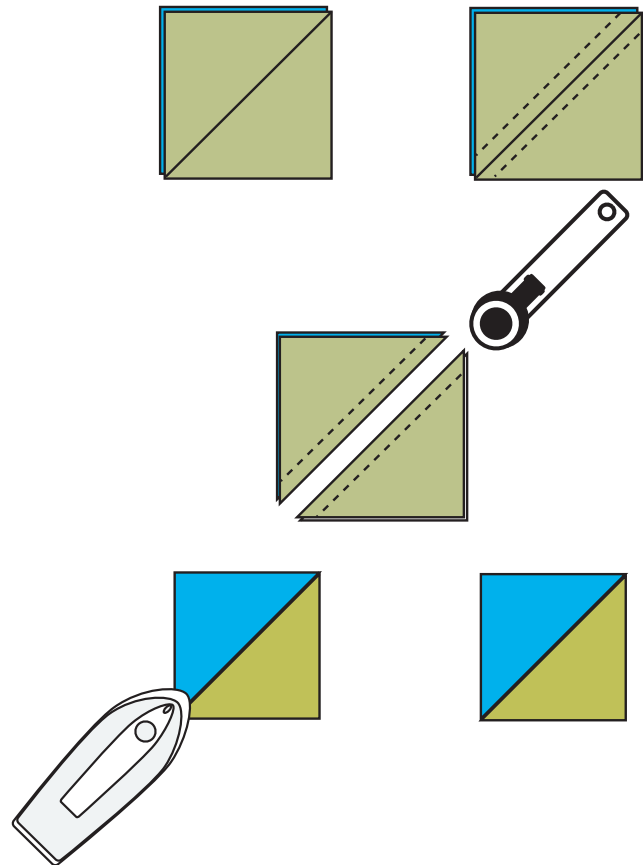
Water Goblet

By Mary L Devendorf

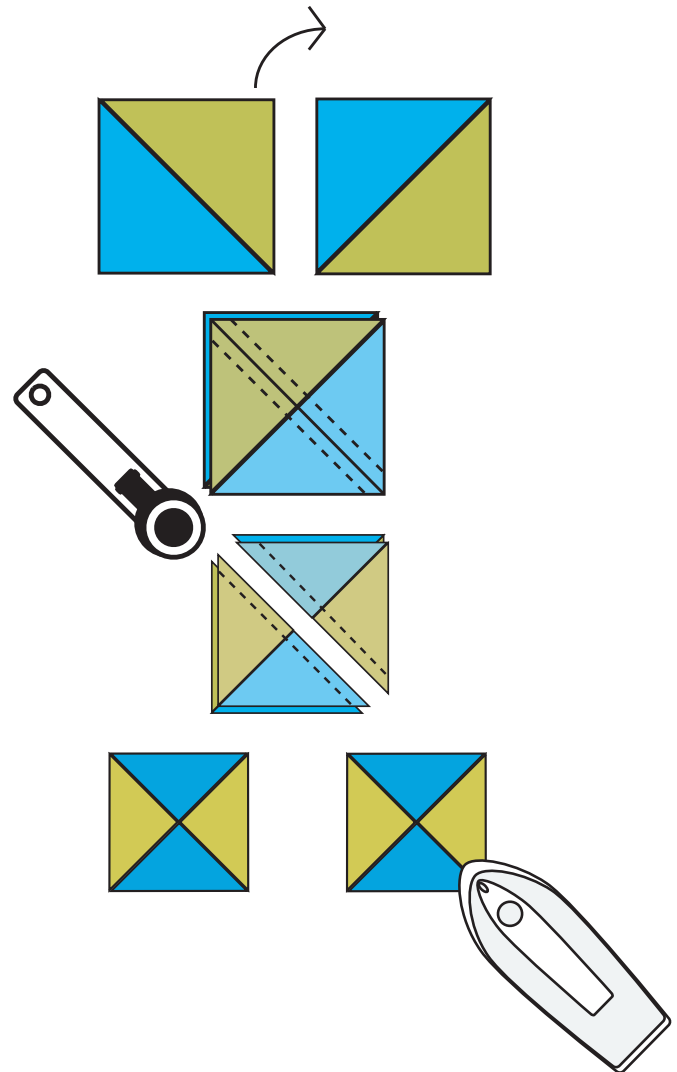
Fabric Requirements for Finished 6" x 7" Block

- (1) 4 ¼" square Background
- (1) 1 ½" x 3 ½" rectangle Background
- (1) 3 ½" x 7 ½" rectangle Background
- (1) 4 ¼" square Goblet
- (1) 3 ½" square Goblet

1. Stack one 4 ¼" Background square and one 4 ¼" Goblet square, right sides together. Draw a diagonal line on top square.
2. Stitch ¼" away from both sides of line.
3. Cut apart on drawn line, making two identical half square triangles.
4. Press seam allowance to darker side.



5. Stack two half square triangles on top of each other, opposite colors touching and right sides together.
6. Draw a diagonal line, corner to corner and perpendicular to previous seam.
7. Stitch $\frac{1}{4}$ " away from both sides of line.
8. Cut apart on drawn line, making two identical quarter square triangles.
9. Press seam allowance to one side.

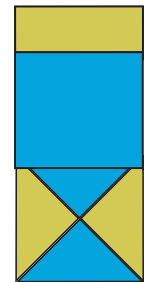


10. Stitch a 1 ½" x 3 ½" Background rectangle to a 3 ½" Goblet square.



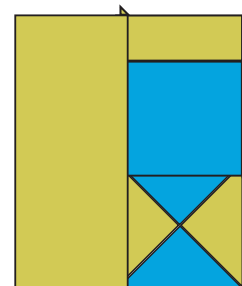
11. Press seam toward Goblet.

12. Sew the Goblet top to the quarter square triangle (Water Goblet base) with a ¼" seam allowance.



13. Press seam toward Goblet.

14. Sew a 3 ½" x 7 ½" Background rectangle to the left side of Water Goblet with a ¼" seam allowance.



15. Press seam toward Background.